

ART SHape

LIMITED

ANNUAL REPORT
2001/2002

About Art Shape

Art Shape is an arts organisation enabling equality of access to creative experiences for adults who face disabling barriers.

Since its establishment in 1993, Art Shape has raised funds to invest heavily into researching gaps in provision of creative opportunities, and developing and running projects that inspire, encourage and enable creativity.

This often ground breaking work has established Art Shape as a leading authority in the field of arts and social inclusion, whilst enabling the development of best practice and programme models for use by arts and non-arts sector groups and organisations throughout the country.

This annual report reviews how Art Shape has worked towards its vision over the past year. Art Shape hopes you will find reading it as enjoyable and inspiring as those involved have found accomplishing the work.

Vision

Art Shape's vision is that everyone can choose to engage with the arts as equals.

Mission

Art Shape works with individuals, communities and organisations to combat exclusion from the arts, with a particular focus on working with adults facing disabling barriers.

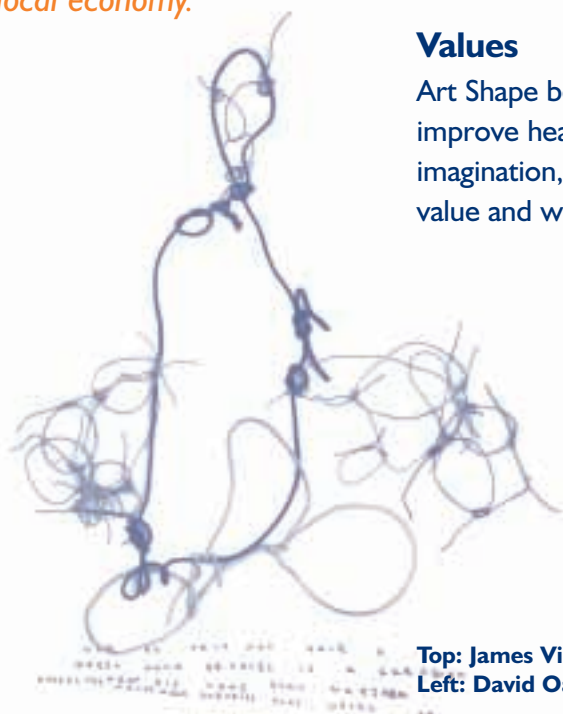
Values

Art Shape believes in the power of the arts to change lives and improve health and well being. It is committed to creativity and imagination, equality and access. Art Shape recognises individual value and worth built upon mutual respect, warmth and integrity.

'Art Shape is driving social change by informing policy, identifying gaps in arts provision and stimulating the development of new possibilities in the arts.'



'Art Shape is committed to being a good employer and to investing in the local economy.'



Top: James Viner and John Oliver 'Untitled collage'
Left: David Oates 'John Marjoram'

Chair's Report

Someone once explained equality to me as working on different levels. 'If equal opportunity is a door', she said 'you can point the way more clearly, share the skills to open it or, by going through the door with someone, change opportunities for others and yourself.'

Art Shape believes that participation in art enables skills and confidence and gives people who have been excluded a tangible presence in the mainstream. Art Shape believes in integration, with no distinctions made between artists with disabilities and those without. Through projects we undertake ourselves, and others that we foster, we strive to learn what works in enabling participation and integration.

We are trying to point the way more clearly through taking the lead locally in developing improved information and guidance systems for artists' continuous development.

We are sharing skills through participating in the Arts Council Apprenticeship Scheme and delivering programmes of training and mentoring.

We are learning from "walking through the door" on such notable projects as *On The Level*, with artists exhibiting together as equals – a joy to prepare and a joy to view – and the Pre Access Printmaking course, a partnership with the University of Gloucestershire, with artists enjoying learning environments as equals.

Every penny for every project has to be fundraised. We thank those funders who give every year and create the stable base for the organisation and we thank those funders who see something in the project proposals that catches their eye and make new things possible.

Personally I would like to thank Art Shape's members, staff and Board who give of themselves to make Art Shape an organisation that has fun and makes fun.

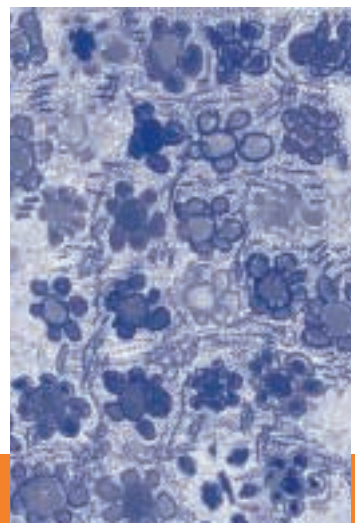


Elizabeth Ball
Chair

Top to bottom: Julian Mason 'Untitled print', Nicky Harris 'Untitled painting' detail, Janet Vanner 'Untitled wax drawing'



'Given our recent successes in fundraising, such as being among the first voluntary sector organisations to get a LIF grant for the Pre Access and Artbridge courses, we are confident that we will find a way through the significant changes in funding landscape, particularly in adult education and arts. But it will be a challenge!'



2001/02 – Another Successful Year

New Doors

In 2001/02 Art Shape secured one of the first voluntary sector grants from the Local Learning and Skills Council. This grant enabled a flourishing new partnership with the University of Gloucestershire to run a Pre-Access Printmaking Course for 21 students with learning disabilities – building confidence in the artform, discovering life as University students and opening their progressional horizons.

Teams of people who face disabling barriers have informed colour scheming and aesthetic considerations for new NHS Trust properties. A new interior design group based at Smartworks in Stroud were employed as advisors for work at the Standish Hospital Unit, and over 50 people facing mental health issues were consulted during the Montpellier Ward project at Wotton Lawn.

73 artists exhibited together as equals in Art Shape's first major exhibition, *On The Level*. The mixed media arts event featured work from a broad cross-section of Gloucestershire's arts community – disabled and non-disabled artists, professional and emerging artists exhibited together for the first time.

Art Shape's older people's work has continued to develop. A new creative care qualification for care workers in centres and homes is beginning to take shape, and a team of older volunteers have formed an arts pioneer team learning new skills to run creative sessions in centres.

At a structural level, Art Shape is a key developmental partner in Matrix, a South West regional partnership of arts organisations committed to improving access to continuing professional development information and guidance. This ongoing work will establish a comprehensive and accessible service to all arts practitioners and those working in the arts.

Existing Doors

Smartworks, The Pier Group and Partake have continued to grow towards their own, independent sustainability. There are challenges ahead for each group – building skills and confidence to manage and administrate an organisation; searching for new, accessible studios. However, this year has seen major developments: Partake have recently completed a public artwork commission for Knightstone Housing Association; members of Smartworks have been undertaking business courses and individual goal setting programmes, and have installed new computer equipment for learning and creative projects; Paint Magic and Garden Magic

To reflect the 'open door' analogy introduced by Art Shape's Chair, 2001/02 has seen the organisation fling open new doors, hold existing ones wide and challenge whether the shape of the door is appropriate for those that wish to go through it.

Mark Peacey sketching at Jerwood Exhibition



members have found new markets for their work; The Pier Group have significantly increased their membership and finally found a home they can call their own.

Art Shape's vision is that everyone can choose to engage with the arts as equals and there is no doubt that these organisations fill a significant gap in provision for those seeking warm, welcoming and inclusive opportunities to discover and develop their creativity, offering a new choice for economic activity within the social enterprise sector.

'Choice' is key to the vision, and for those wishing to take accredited routes through arts learning the ArtBridge Course, specifically designed for people who face barriers, continues to offer a supportive framework, high quality learning and guidance towards entry to college courses.

Changing the Shape of Doors

Art Shape's strength lies in its constant challenging of the status quo. Barriers to arts access for people who face disabling barriers can only be removed through 'changing the shape of doors'.

Art Shape has challenged major educational funders to take account of the needs of disabled people wishing to develop skills through non-accredited routes. This issue promises to be at the heart of Art Shape's work for the foreseeable future.

Also this year, Art Shape has been commissioned to question structures which exclude people from arts education and experiences: Investigating Access to Further and Higher Education for Disabled Arts Students on behalf of West Midlands Arts; considering new options for arts engagement in the North Cotswolds on behalf of Social Services and the NHS Trust; examining older people as arts audiences in Gloucestershire as part of the Arts Council of England's New Audiences Programme.

The debate on equality for disabled people within the arts was further investigated through a critical essay produced to accompany the *On The Level* exhibition by commissioned writer, Victoria Field.

In an increasingly difficult funding climate, Art Shape continues to open and create new doors (very beautiful ones of course!), so people can choose their own routes to artistic engagement. There is no doubt that the arts have an exciting role to play as a tool for cultural, social and economic regeneration and Art Shape will continue to ensure that disabled people are at the heart of this change, as equals.



Top: Rachel Metcalf at Making Things class

Above: Simon Packard in collaboration with Partake, 'Kinetic Tree' detail

*Art Shape has employed **45 professional and emerging artists** locally to deliver **370 days** (over 2780 hours) of creative experiences, supported by **14 volunteers** and **11 apprenticeships**.*

*Participants have enjoyed over **35 different artforms** during classes and courses, with **430 registered students** receiving **9720 learner hours**, and **36 creative projects** directly involving **more than 1700 people** at **34 venues** in the county and beyond.*

“I love the idea of artists of all levels exhibiting together, it benefits everyone, the artists and the viewers” artist

On The Level

Double Reynolds Warehouse, Gloucester Docks

On The Level was Art Shape’s most ambitious exhibition project to date. An audience of 1,500 people experienced the work of 73 artists working across a variety of media: painting, drawing, sculpture, sound installation, crafts and photography.

The exhibition was about artists exhibiting together as equals, whether they were just starting out on their creative paths or working as professional practitioners. Central to *On The Level* was a commitment to providing exhibiting opportunities for artists who face barriers of access, including disabled artists. Barriers identified by Art Shape in consultation with these artists include lack of opportunity, emotional, intellectual, cultural and physical access issues, lack of confidence/training and lack of support.

On The Level sought to challenge these issues head on by offering an accessible opportunity with advice, support and information built in. In addition, two work experience positions were offered to disabled artists wishing to develop their portfolio to include administrative/curatorial skills; workshops were run collaboratively by emerging and professional artists, offering hands on activities (sculpture, written word, paint, textile) designed for the widest audience; a welcoming team of volunteers, which included some of the exhibiting artists, staffed the exhibition – playing a crucial role in helping to break down emotional access barriers to arts experiences.



Left: Dorothy Godleman ‘Tulip Pot’
Opposite top to bottom: Ken Gower ‘Acorn Print’, Bill Waddell ‘Relaxing Figure’, Ray Williams ‘Black Alien’ detail, Sophia Hughes ‘Handbuilt Vessel’

“A real inspiration, such home grown talent shouldn't go unnoticed and un-shown – thanks to Art Shape it hasn't” visitor

In addition, *On The Level* provided a stimulating backdrop for wider debate:

- Investigating assumptions of success – what ‘success’ means to individual practitioners and to audiences
- Challenging perceptions created through the use of societal labels (e.g. professional artist, amateur artist, disabled artist, black artist, insider/outsider art) and through the use of exhibition interpretation panels and ‘labelling’ (e.g. CV’s, artist statements).
- Investigating the arts as a tool for social inclusion

On The Level succeeded on many levels – raising Art Shape’s profile locally, regionally and nationally; offering an inclusive, high profile opportunity for Gloucestershire’s artists; providing a forum for debate; offering linked training options for disabled people. But perhaps the best evidence of success is shown by the response of the audience and participating practitioners:

“I felt at last like a real artist. Never in my life before have a felt like a real artist, only a struggling artist!”

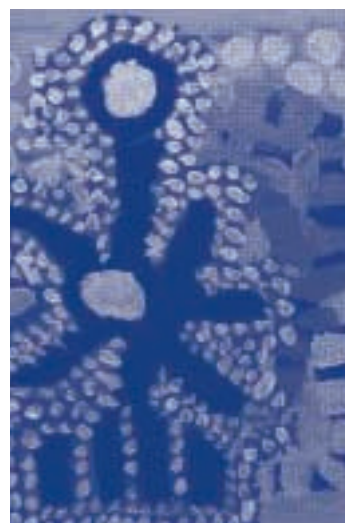
“I can now understand the joy of making art” visitor

“An inspiring idea and it really works” visitor



“A beautiful, vibrant and thought provoking exhibition”

visitor



“Amazing artwork, selection was complementary and inspired” artist



Visually Impaired People's Art Group, Stroud

'No one has ever suggested that I could draw'

This comment has come from a pilot project run in Stroud encouraging people with visual impairments to take an active part in making art. The group has been small and focussed, meeting 15 times through the Autumn and Spring. In the first term all kinds of techniques were experienced – drawing, pastels, collage, pottery, foil relief, plaster casting and modelling – and life drawing with a visiting dog as a model!

In the following term, the group explored the theme of mazes, researching history and designs from enlarged photocopies, and visiting the maze at the Rococo Garden, Painswick. The rest of the sessions involved the group developing and building a tactile/sensory maze, using fabric, rope, aromatic spices, pulses, screws, washers, staples, sequins, coloured sand and buttons.

The group have a terrific commitment to carry on – their enthusiasm and self confidence showed through when talking to the Stroud Blind Club, at the opening of their aMazeing exhibition at the Stroud District Council offices, and when helping "Paint the Subscription Rooms" at a public 'You Can Do It' event. This was a pilot project which will hopefully continue with support from the local community and formal grant funding. For the group members, drawing will be part and parcel of every day life from now on.

"To me this is a lifeline – another door opened"

group member

"She's really come out of herself, she's like a different person" friend of group member



Left: Alice Cooke 'Mediaeval Motifs' detail

Bottom: Some of the group members with their work

Pre Access Print Making in Partnership with University of Gloucestershire

Take 21 keen students, a stimulating arts environment and a dynamic tutor and a project has a good chance of success. The Print Making course run at The University of Gloucestershire had all these ingredients and more and it has certainly been a great success.

Tutor Amanda Lowery has run a detailed course in print making techniques using the resources of the University – the library, slides of artists work and the large Adult Education Studio. The students have studied 20th Century art and five different print techniques. Their work has been celebrated in three exhibitions at the University and one at Garden Wing, Delancey.

Many of the students have been actively involved in arts projects at their Adult Opportunity Centres in Cheltenham but for everyone the move into a dedicated arts building filled with changing colour and image has really stimulated a full response and a new dimension of arts expertise.

This course continues and will culminate in a large scale exhibition in September 2002.

“I’ve really enjoyed it” student

“More art. It was ace!” student



*“I can’t wait to come back
and do it again!”* student

Left: Ray Collette ‘Untitled print’ detail
Right: Group at end of term exhibition

Statement of Financial Activities for the Year Ended 31st March 2002 (Including Income & Expenditure Account)

| INCOME & EXPENDITURE | UNRESTRICTED FUNDS £ | RESTRICTED FUNDS £ | DESIGNATED FUNDS £ | TOTAL 2002 FUNDS £ | TOTAL 2001 FUNDS £ |
|--|-----------------------------|---------------------------|---------------------------|---------------------------|---------------------------|
| INCOMING RESOURCES | | | | | |
| Donations | 67,194 | - | - | 67,194 | 66,152 |
| Activities in furtherance of the Charity's objectives: Grants | 7,884 | 117,407 | - | 125,291 | 183,952 |
| Interest receivable | 2,358 | 88 | - | 2,446 | 2,000 |
| Total Incoming Resources | 77,436 | 117,495 | - | 194,931 | 252,104 |
| RESOURCES EXPENDED | | | | | |
| Cost of generating funds | 16,283 | - | - | 16,283 | 17,383 |
| CHARITABLE EXPENDITURE | | | | | |
| Costs of activities in furtherance of the charity's objectives | 8,062 | 108,164 | - | 116,226 | 176,320 |
| Support costs | 36,380 | 9,386 | - | 45,766 | 42,428 |
| Management administration | 20,322 | - | - | 20,322 | 21,277 |
| Total Resources Expended | 81,047 | 117,550 | - | 198,597 | 257,408 |
| NET INCOMING RESOURCES BEFORE TRANSFERS | | | | | |
| Net income for year | (3,611) | (55) | - | (3,666) | (5,304) |
| Transfer between funds | (3,500) | - | 3,500 | - | - |
| Net movement in funds for the Year | (7,111) | (55) | 3,500 | (3,666) | (5,304) |
| BALANCE AT 1ST APRIL 2001 | 32,036 | 53,318 | 13,243 | 98,597 | 103,901 |
| BALANCE AT 31ST MARCH 2002 | 24,925 | 53,263 | 16,743 | 94,931 | 98,597 |

(This is an extract from the full audited accounts approved by the Board of Directors).

DEFINITIONS

Unrestricted – Funds with flexibility within defined terms and conditions

Restricted – Funds for a specific pre-defined purpose

Designated – Funds for a specific purpose as defined by the Board of Directors

The Art Shape Team

Art Shape believes in individual value and worth built upon mutual respect, warmth and integrity. Art Shape understands that its work could not and would not be so successful without the support and involvement of many people, and would like to thank everyone associated with the organisation for their enthusiasm and dedication, including:

The Management Team

| | |
|----------------|-------------|
| Elaine Albrow | Jay Haigh |
| Camilla Hale | Sue Roberts |
| Caroline Scott | |

Apprentice Programme Co-ordinator

Emma Reynolds
and Associates Gretel Watson and Nic Roberts

Board of Directors 2001/2002

| | |
|-------------------------|-----------------------------|
| Elizabeth Ball – Chair | Max Bullingham – Vice Chair |
| Chris Burke – Treasurer | Rita Corrigan |
| Fiona O'Neill | Chris Pilditch |
| Nel Rann | Andy Rickell |
| Diana Rosewell | Tom Taylor |
| Vicki Warwood | Margaret Whalley |
| Janet Zoro | Helen Owen - Observer |

Volunteers & Co-workers

| | |
|------------------|-----------------|
| Simon Watkins | Sophie Russell |
| Patrick Swayze | Penny Chislet |
| Sarah Francis | Christine Hayes |
| Gary Pierpoint | Colin Simon |
| Jude McClean | Sophie Joy |
| Julia Fry | Frances Cook |
| Sheila Blakemore | |

Artists; Assistors, Tutors & Apprentices

Jayni Anderton
Chris Bingle
Lizzie Bird
Sheila Blakemore
Julia Christie
Mark Clifford
Frances Cook
Ronnaug Dowle
Victoria Field
Rod Friend
Julia Fry
Francis Gobey
Kim Hampton
Ali Heywood
Debbie Hill
Kim Hill
Corinne Hockley
Natasha Houseago
Sarah Hughes
Nina Loveridge
Amanda Lowery
Sue Nichols
Shelley Nicholson
Fiona O'Neill
Katie Ordonez
Simon Packard
Lis Parker
Ray Paul
Lucinda Pearce-Higgins
Gary Pierpoint
Penny Prince
Peter Stone
Richard Straley
Rachel Thomas
Craig Trafford
Liz Wade
Susie Walker
Chris White

If you are interested in finding out more about Art Shape's work, if you want to support the organisation with your time, or if you are interested in offering financial support to the organisation, contact the management team at the Art Shape office in Gloucester (details on back page).

Art Shape would like to thank all its funders, customers and partners for their invaluable support, involvement and validation throughout the year:

ACET in Gloucestershire

Artspark

Barnwood House Trust

Cheltenham Borough Council

Cirencester College

Cotswold District Council

**East Gloucestershire
NHS Trust**

Gloscat

Gloucester City Council

**Gloucestershire County Council
Libraries, Arts & Museums**

**Gloucestershire County Council
Social Services**

Learning & Skills Council

NIACE

North Cornwall Arts

PPP

Severn NHS Trust

South West Arts

**Stroud & Swindon
Building Society**

Stroud College

Stroud District Council

Tewkesbury Borough Council

University of Gloucestershire

West Midlands Arts



**Art Shape Ltd
26 Station Road
Gloucester, GL1 1EW**

Tel: 01452 307684

Fax/Minicom: 01452 541145

Email: info@artshape.co.uk

www.artshape.co.uk

Art Shape Limited, Registered in England and Wales
Registration Number 2699644
Registered Charity Number 1023920

Front cover: Exhibits from 'On The Level' Exhibition. Photos taken by Linda Lane

*Top to bottom: Helen Roche 'Line Upon Line', Gill Burke 'Teenage Fun',
Carol Wilkins 'Crown Pot', Sue Wood 'Red Pot', Carol Green "Lizard",
Keith Jameson 'Man Upside Down'*